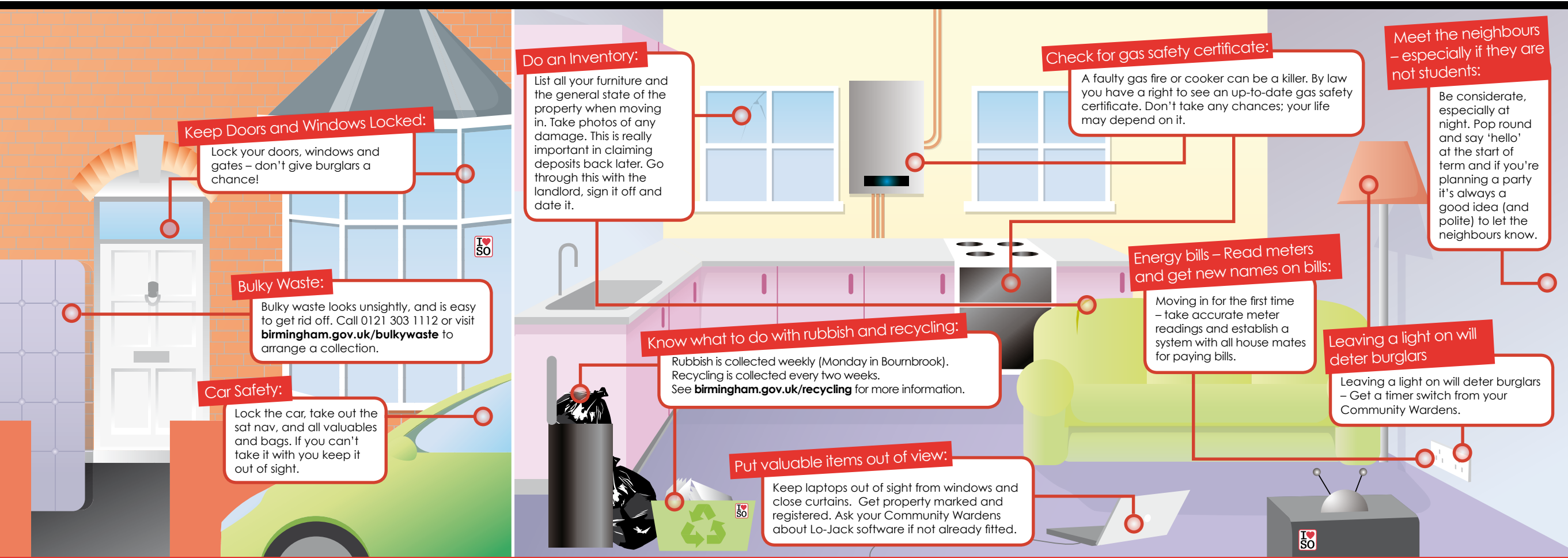


Moving Out, Moving In...

Moving out of University accommodation and into the local area can be a big change. Below are some useful tips on what to look out for in your newly rented accommodation, and what to be aware of in terms of neighbours and other residents in the area. The tips below apply whether you have chosen to live in Selly Oak or another near-by area.

If you are ever concerned about safety, security, contractual problems, environmental issues, refuse or recycling, or simply want to check that the information given to you by your new landlord is correct then please do not hesitate to get in contact with the Community Wardens, the Advice & Representation Centre (ARC) or Living (based at the University). All contact details can be found overleaf.



Keep Doors and Windows Locked:

Lock your doors, windows and gates – don't give burglars a chance!

Bulky Waste:

Bulky waste looks unsightly, and is easy to get rid off. Call 0121 303 1112 or visit birmingham.gov.uk/bulkywaste to arrange a collection.

Car Safety:

Lock the car, take out the sat nav, and all valuables and bags. If you can't take it with you keep it out of sight.

Do an Inventory:

List all your furniture and the general state of the property when moving in. Take photos of any damage. This is really important in claiming deposits back later. Go through this with the landlord, sign it off and date it.

Check for gas safety certificate:

A faulty gas fire or cooker can be a killer. By law you have a right to see an up-to-date gas safety certificate. Don't take any chances; your life may depend on it.

Meet the neighbours – especially if they are not students:

Be considerate, especially at night. Pop round and say 'hello' at the start of term and if you're planning a party it's always a good idea (and polite) to let the neighbours know.

Know what to do with rubbish and recycling:

Rubbish is collected weekly (Monday in Bournbrook). Recycling is collected every two weeks. See birmingham.gov.uk/recycling for more information.

Energy bills – Read meters and get new names on bills:

Moving in for the first time – take accurate meter readings and establish a system with all house mates for paying bills.

Leaving a light on will deter burglars

Leaving a light on will deter burglars – Get a timer switch from your Community Wardens.

Put valuable items out of view:

Keep laptops out of sight from windows and close curtains. Get property marked and registered. Ask your Community Wardens about Lo-Jack software if not already fitted.

Contacts:

The Community Wardens are on hand to answer your community questions – no problem or concern is too small – just ask!

📞 0121 251 2502
✉ community@guild.bham.ac.uk
📘 I Love Selly Oak
🐦 @WardensGuild

Sign up for Selly Watch
Crime prevention & text information service:
guildofstudents.com/sellywatch



For advice and guidance whilst you are still in University accommodation then contact the Student Mentor Scheme:

📞 0121 257 4490
✉ mentorwelfareoffice@guild.bham.ac.uk
📘 Student Mentor Scheme
🐦 @StudentMentors1

For advice on student issues relating to academic, housing, employment, finance and immigration, please contact; the ARC (Advice & Representation Centre):

📞 0121 251 2400
✉ thearc@guild.bham.ac.uk
🌐 guildofstudents.com/thearc

For information about University, private sector accommodation, and for housing advice, please contact; Living (based at University Centre, University of Birmingham):

Open: 9.00-17.00 Mon-Fri
📞 0121 414 8000
🌐 www.has.bham.ac.uk/studentaccom

OUT of University accommodation...

...INTO a house

WELCOME TO
SELLY OAK

I ♥ SO

FOR A SAFER, CLEANER,
GREENER SELLY OAK

10 top tips for a successful
move into the local
community.



UNIVERSITY OF
BIRMINGHAM

guildofstudents

UNIVERSITY OF
BIRMINGHAM

guildofstudents



Contacts:

The Community Wardens are on hand to answer your community questions – no problem or concern is too small – just ask!

- 📞 0121 251 2502
- ✉ community@guild.bham.ac.uk
- 📘 I Love Selly Oak
- 🐦 @WardensGuild

Sign up for Selly Watch - Crime prevention & text information service:
guildofstudents.com/sellywatch



Mentor contact details:

For advice and guidance whilst you are still in University accommodation then contact the Student Mentors:

- 📞 0121 257 4490
- ✉ mentorwelfareoffice@bham.ac.uk
- 📘 Student Mentor Scheme

For advice on student issues relating to academic, housing, employment, finance and immigration, please contact:

The ARC (Advice & Representation Centre):

- 📞 0121 251 2400
- ✉ thearc@guild.bham.ac.uk
- 🌐 guildofstudents.com/thearc

For information about University, private sector accommodation, and for housing advice, please contact:

Living (based at University Centre, University of Birmingham):

- Open: 9.00-17.00 Mon-Fri
- 📞 0121 414 8000
- 🌐 www.has.bham.ac.uk/studentaccom

OUT of University accommodation...

...INTO a house

WELCOME TO
SELLY OAK

I ♥ SO

FOR A SAFER, CLEANER,
GREENER SELLY OAK

10 top tips for a successful
move into the local
community.



UNIVERSITY OF
BIRMINGHAM

guildofstudents

UNIVERSITY OF
BIRMINGHAM

guildofstudents

